

Rat REG3A (His Tag) recombinant protein



Catalog Number: 503802

General Information

Gene Name Synonym

Islet of Langerhans regenerating protein 3; Lithostathine 3; Pancreatitis-associated protein 2; RegIII; Regenerating islet-derived protein III-alpha; Regenerating islet-derived protein 3-alpha 16.5 kDa form; Regenerating islet-derived protein 3-alpha 15 kDa form

Protein Construction

A DNA sequence encoding the rat REG3A (BAA04904.1) (Met1-Gln174) was expressed, fused with a polyhistidine tag at the C-terminus.

Organism

Rat

Expression Host

Human Cells

QC Testing

Purity

> 95 % as determined by SDS-PAGE

Endotoxin

< 1.0 EU per μg of the protein as determined by the LAL method

Stability

Samples are stable for up to twelve months from date of receipt at -70°C

Predicted N terminal

Glu 26

Molecular Mass

The recombinant rat REG3A comprises 160 amino acids and predicts a molecular mass of 17.9 kDa. The apparent molecular mass of the recombinant protein is approximately 17 kDa in SDS-PAGE under reducing conditions due to glycosylation.

Formulation

Lyophilized from sterile PBS, pH 7.4

1. 5 % trehalose and mannitol are added as protectants before lyophilization.

2. Please contact us for any concerns or special requirements.

Usage Guide

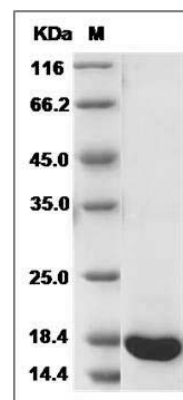
Storage

Store it under sterile conditions at -20°C to -80°C . It is recommended that the protein be aliquoted for optimal storage. Avoid repeated freeze-thaw cycles.

Reconstitution

Adding sterile water, prepare a stock solution of 0.25 mg/ml. Concentration is measured by UV-Vis.

SDS-PAGE



Rat REG3A Protein (His Tag) SDS-PAGE