

# Human PSGL-1/CD162 (His & Fc Tag) recombinant protein



Catalog Number: 503632

## General Information

### Gene Name Synonym

Selectin P ligand

### Protein Construction

A DNA sequence encoding the extracellular domain (Met1-Val295) of human PSGL-1 precursor (AAC50061.1) was fused with the C-terminal polyhistidine-tagged Fc region of human IgG1 at the C-terminus.

### Organism

Human

### Expression Host

Human Cells

## QC Testing

### Purity

> 95 % as determined by SDS-PAGE

### Endotoxin

< 1.0 EU per  $\mu$ g of the protein as determined by the LAL method

### Stability

Samples are stable for up to twelve months from date of receipt at -70°C

### Predicted N terminal

Leu 18

### Molecular Mass

The recombinant human PSGL-1/Fc is a disulfide-linked homodimer after removal of the signal

peptide and the prppeptide. The reduced monomer consists of 526 amino acids and has a predicted molecular mass of 57.1 kDa. In SDS-PAGE under reducing conditions, the apparent molecular mass of rh PSGL-1/Fc monomer is approximately 110-120 kDa due to glycosylation.

### Formulation

Lyophilized from sterile PBS, pH 7.4

1. 5 % trehalose and mannitol are added as protectants before lyophilization.

2. Please contact us for any concerns or special requirements.

## Usage Guide

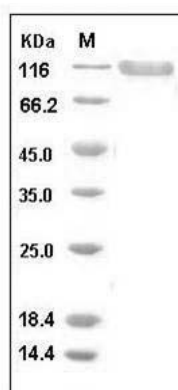
### Storage

Store it under sterile conditions at -20°C to -80°C. It is recommended that the protein be aliquoted for optimal storage. Avoid repeated freeze-thaw cycles.

### Reconstitution

Adding sterile water, prepare a stock solution of 0.25 mg/ml. Concentration is measured by UV-Vis.

### SDS-PAGE



Human PSGL-1 / CD162 Protein (His & Fc Tag)  
SDS-PAGE