

# Human PD1/PDCD1/CD279 (His Tag) recombinant protein



Catalog Number: 503606

## General Information

### Gene Name Synonym:

### Protein Construction:

A DNA sequence encoding the extracellular domain (Met 1-Gln 167) of human PD1 (NP\_005009.2) was expressed with a C-terminal polyhistidine tag.

**Source:** Human

**Expression Host:** Human Cells

## QC Testing

### Activity:

Measured by its binding ability in a functional ELISA. Immobilized human PD-1 at 10 µg/ml (100 µl/well) can bind recombinant human B7-H1 / PD-L1 / Fc chimera with a linear range of 0.02-0.4 µg/ml.

### Purity:

> 95 % as determined by SDS-PAGE

### Endotoxin:

< 1.0 EU per µg of the protein as determined by the LAL method

### Stability:

Samples are stable for up to twelve months from date of receipt at -70°C

### Predicted N terminal:

Leu 25

## Molecular Mass:

The recombinant mature human PD1 consists of 154 amino acids and has a calculated molecular mass of 17.4 kDa.

## Formulation:

Lyophilized from sterile PBS, pH 7.4  
1. 5 % trehalose and mannitol are added as protectants before lyophilization.  
2. Please contact us for any concerns or special requirements.

## Usage Guide

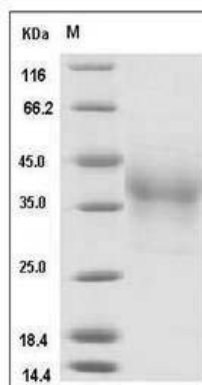
### Storage:

Store it under sterile conditions at -20°C to -80°C. It is recommended that the protein be aliquoted for optimal storage. Avoid repeated freeze-thaw cycles.

### Reconstitution:

Adding sterile water, prepare a stock solution of 0.25 mg/ml. Concentration is measured by UV-Vis.

### SDS-PAGE:



Human PD1 / PDCD1 Protein (His Tag) SDS-PAGE