

General Information

Protein Construction

A DNA sequence encoding the human OSM (NP_065391.1) (Met1-Arg221) was expressed.

Organism

Human

Expression Host

Human Cells

QC Testing

Activity

Measured in a cell proliferation assay using TF-1 human erythroleukemic cells.
The ED₅₀ for this effect is typically 0.2-1 ng/mL.

Purity

> 95 % as determined by SDS-PAGE.

Endotoxin

<1.0 EU per µg protein as determined by the LAL method.

Stability

Samples are stable for up to twelve months from date of receipt at -70°C

Predicted N terminal

Ala 26

Molecular Mass

The recombinant human OSM consists 196 amino acids and predicts a molecular mass of 22.2 kDa.

Formulation

Lyophilized from sterile PBS, pH 7.4.

1. 5 % trehalose and mannitol are added as protectants before lyophilization.

2. Please contact us for any concerns or special requirements.

Usage Guide

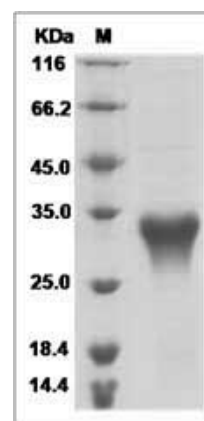
Storage

Store it under sterile conditions at -20°C to -80°C. It is recommended that the protein be aliquoted for optimal storage. Avoid repeated freeze-thaw cycles.

Reconstitution

Adding sterile water, prepare a stock solution of 0.25 mg/ml. Concentration is measured by UV-Vis.

SDS-PAGE



Human Oncostatin M / OSM Protein SDS-PAGE