

# Human CXCL1 recombinant protein



Catalog Number: 503587

## General Information

### Gene Name Synonym

C-X-C motif chemokine 1; GRO-alpha(1-73);  
Melanoma growth stimulatory activity;  
Neutrophil-activating protein 3; GRO-alpha(4-73);  
GRO-alpha(5-73); GRO-alpha(6-73)

### Protein Construction

A DNA sequence encoding the human CXCL1  
(P09341-1) (Ala35-Asn107) was expressed.

### Organism

Human

### Expression Host

E. coli

## QC Testing

### Purity

> 85 % as determined by SDS-PAGE

### Endotoxin

Please contact us for more information.

### Stability

Samples are stable for up to twelve months from  
date of receipt at -70°C

### Predicted N terminal

Ala 35

### Molecular Mass

The recombinant human CXCL1 consists of 73  
amino acids and predicts a molecular mass of 7.9  
kDa. It migrates as an approximately 7-10 kDa  
band in SDS-PAGE under reducing conditions.

### Formulation

Lyophilized from sterile PBS, pH 7.4.

1. 5 % trehalose and mannitol are added as  
protectants before lyophilization.
2. Please contact us for any concerns or special  
requirements.

## Usage Guide

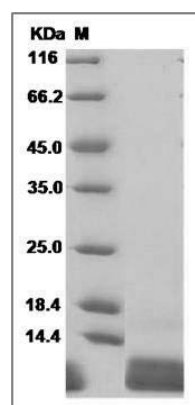
### Storage

Store it under sterile conditions at -20°C to -80°C.  
It is recommended that the protein be aliquoted  
for optimal storage. Avoid repeated freeze-thaw  
cycles.

### Reconstitution

Adding sterile water, prepare a stock solution of  
0.25 mg/ml. Concentration is measured by UV-Vis.

### SDS-PAGE



Human CXCL1 / MGSA / NAP-3 Protein SDS-PAGE