

Human HER3/ErbB3 (His Tag) recombinant protein



Catalog Number: 503568

General Information

Gene Name Synonym

Proto-oncogene-like protein c-ErbB-3; Tyrosine kinase-type cell surface receptor HER3

Protein Construction

A DNA sequence encoding the extracellular domain (Met 1-Thr 643) of human ErbB3 (NP_001973.2) precursor was expressed, with a C-terminal polyhistidine tag.

Organism

Human

Expression Host

Human Cells

QC Testing

Activity

1. Measured by its binding ability in a functional ELISA.
2. Immobilized human ErbB3 at 2 µg/mL (100 µl/well) can bind human NRG1 (isoform Beta1), The EC₅₀ of human NRG1 (isoform Beta1) is 0.43 µg/mL.

Purity

> 95 % as determined by SDS-PAGE

Endotoxin

< 1.0 EU per µg of the protein as determined by the LAL method

Stability

Samples are stable for up to twelve months from date of receipt at -70°C

Predicted N terminal

Ser 20

Molecular Mass

The recombinant human ErbB3 protein consists of 635 amino acids after the removal of signal peptide and has a calculated molecular mass of 70.2 kDa. As a result of glycosylation, the recombinant ErbB3 migrates as an approximately 100-110 kDa band in SDS-PAGE under reducing conditions.

Formulation

Lyophilized from sterile PBS, pH 7.5

1. 5 % trehalose and mannitol are added as protectants before lyophilization.
2. Please contact us for any concerns or special requirements.

Usage Guide

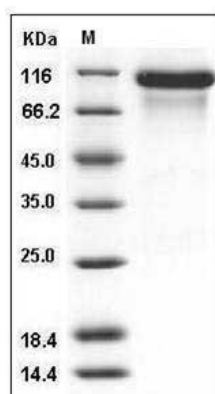
Storage

Store it under sterile conditions at -20°C to -80°C. It is recommended that the protein be aliquoted for optimal storage. Avoid repeated freeze-thaw cycles.

Reconstitution

Adding sterile water, prepare a stock solution of 0.25 mg/ml. Concentration is measured by UV-Vis.

SDS-PAGE



Human HER3 / ErbB3 Protein (His Tag) SDS-

Human HER3/ErbB3 (His Tag) recombinant protein



Catalog Number: 503568

PAGE