

# Human HER3/ErbB3 (Fc Tag) recombinant protein



Catalog Number: 503562

## General Information

### Gene Name Synonym

Proto-oncogene-like protein c-ErbB-3; Tyrosine kinase-type cell surface receptor HER3

### Protein Construction

A DNA sequence encoding the extracellular domain (Met 1-Thr 643) of human ErbB3 (NP\_001973.2) precursor was expressed with the C-terminal fused Fc region of human IgG1.

### Organism

Human

### Expression Host

Human Cells

## QC Testing

### Activity

Measure by its ability to bind with human NRG1- $\beta$ 1 in a functional ELISA.

### Purity

> 90 % as determined by SDS-PAGE

### Endotoxin

< 1.0 EU per  $\mu$ g of the protein as determined by the LAL method

### Stability

Samples are stable for up to twelve months from date of receipt at -70°C

### Predicted N terminal

Ser 20

### Molecular Mass

The mature recombinant human ErbB3/Fc chimera is a disulfide-linked homodimeric protein after the removal of signal peptide. The monomer consists of 862 amino acids and has a calculated molecular mass of 95.4 kDa. As a result of glycosylation, the recombinant monomer migrates as an approximately 130-140 kDa protein in SDS-PAGE under reducing conditions.

### Formulation

Lyophilized from sterile PBS, pH 7.4

1. 5 % trehalose and mannitol are added as protectants before lyophilization.

2. Please contact us for any concerns or special requirements.

## Usage Guide

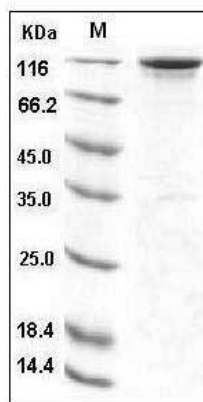
### Storage

Store it under sterile conditions at -20°C to -80°C. It is recommended that the protein be aliquoted for optimal storage. Avoid repeated freeze-thaw cycles.

### Reconstitution

Adding sterile water, prepare a stock solution of 0.25 mg/ml. Concentration is measured by UV-Vis.

### SDS-PAGE



Human HER3 / ErbB3 Protein (Fc Tag) SDS-PAGE