

## General Information

### Gene Name Synonym

RCG44468, isoform CRA\_a

### Protein Construction

A DNA sequence encoding the rat IL6ST (NP\_001008725.2) extracellular domain (Met 4-Glu 618) was fused with a polyhistidine tag at the C-terminus.

### Organism

Rat

### Expression Host

Human Cells

## QC Testing

### Activity

Measured by its ability to inhibit the IL6 R $\alpha$  enhancement of IL6 activity on M1 mouse myeloid leukemia cells (Saito, T. et al. 1991, J. Immunol. 147:168.). The ED<sub>50</sub> for this effect is typically 0.5-2  $\mu$ g/ml in the presence of 50 ng/ml recombinant human IL6sR and 100 ng/ml recombinant human IL6.

### Purity

> 97 % as determined by SDS-PAGE

### Endotoxin

< 1.0 EU per  $\mu$ g of the protein as determined by the LAL method

### Stability

Samples are stable for up to twelve months from date of receipt at -70°C

### Predicted N terminal

Gln 23

### Molecular Mass

The secreted recombinant rat IL6ST comprises 607 amino acids and predicts a molecular mass of 68.2 kDa. The apparent molecular mass of the rat IL6ST is approximately 90-100 kDa in SDS-PAGE under reducing conditions due to glycosylation.

### Formulation

Lyophilized from sterile PBS, pH 7.4

1. 5 % trehalose and mannitol are added as protectants before lyophilization.

2. Please contact us for any concerns or special requirements.

## Usage Guide

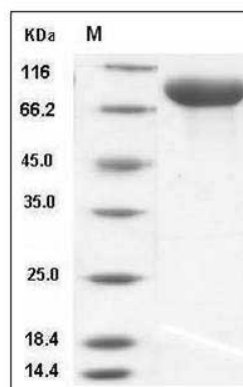
### Storage

Store it under sterile conditions at -20°C to -80°C. It is recommended that the protein be aliquoted for optimal storage. Avoid repeated freeze-thaw cycles.

### Reconstitution

Adding sterile water, prepare a stock solution of 0.25 mg/ml. Concentration is measured by UV-Vis.

### SDS-PAGE



Rat gp130 / IL6ST / CD130 Protein (His Tag) SDS-PAGE