

# Human CDCP1 (Fc Tag) recombinant protein



Catalog Number: 503535

## General Information

### Gene Name Synonym

Membrane glycoprotein gp140; Subtractive immunization M plus HEp3-associated 135 kDa protein; Transmembrane and associated with src kinases

### Protein Construction

A DNA sequence encoding the human CDCP1 (Q9H5V8-3) (Met1-Glu343) was fused with Fc region of mouse IgG at the C-terminus.

### Organism

Human

### Expression Host

Human Cells

## QC Testing

### Purity

(77.1+20.1) % as determined by SDS-PAGE

### Endotoxin

< 1.0 EU per  $\mu\text{g}$  of the protein as determined by the LAL method

### Stability

Samples are stable for up to twelve months from date of receipt at  $-70^{\circ}\text{C}$

### Predicted N terminal

Phe 30

### Molecular Mass

The recombinant human CDCP1/mFc is a

disulfide-linked homodimer. The reduced monomer comprises 548 amino acids and has a predicted molecular mass of 61.4 kDa. The apparent molecular mass of the protein is approximately 89-93 in SDS-PAGE under reducing conditions due to glycosylation.

### Formulation

Lyophilized from sterile PBS, pH 7.4

1. 5 % trehalose and mannitol are added as protectants before lyophilization.

2. Please contact us for any concerns or special requirements.

## Usage Guide

### Storage

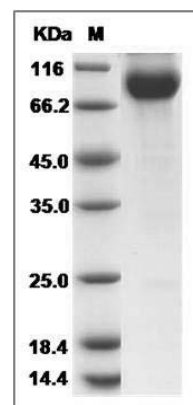
Store it under sterile conditions at  $-20^{\circ}\text{C}$  to  $-80^{\circ}\text{C}$ .

It is recommended that the protein be aliquoted for optimal storage. Avoid repeated freeze-thaw cycles.

### Reconstitution

Adding sterile water, prepare a stock solution of 0.25 mg/ml. Concentration is measured by UV-Vis.

### SDS-PAGE



Human CDCP1 / CD318 Protein (Fc Tag) SDS-PAGE