

# Human E-Selectin/CD62e/SELE (His & Fc Tag) recombinant protein



Catalog Number: 503508

## General Information

### Gene Name Synonym

CD62 antigen-like family member E; Endothelial leukocyte adhesion molecule 1; Leukocyte-endothelial cell adhesion molecule 2

### Protein Construction

A DNA sequence encoding the extracellular domain (Met 1-Pro 556) of human CD62E (NP\_000441.2) precursor was expressed with the fused C-terminal polyhistidine-tagged Fc region of human IgG1 at the C-terminus.

### Organism

Human

### Expression Host

Human Cells

## QC Testing

### Activity

Measured by the ability of the immobilized protein to support the adhesion of U937 human histiocytic lymphoma cells. When cells are added to E-selectin coated plates (2 µg/mL, 100 µL/well) approximately > 60% will adhere specifically.

### Purity

> 95 % as determined by SDS-PAGE

### Endotoxin

< 1.0 EU per µg of the protein as determined by the LAL method

### Stability

Samples are stable for up to twelve months from date of receipt at -70°C

### Predicted N terminal

Trp 22

### Molecular Mass

The recombinant human CD62E/Fc is a disulfide-linked homodimer after removal of the signal peptide. The reduced monomer consists of 782 amino acids and has a predicted molecular mass of 86.5 kDa. In SDS-PAGE under reducing conditions, the apparent molecular mass of rh CD62E/Fc monomer is approximately 140-150 kDa due to glycosylation.

### Formulation

Lyophilized from sterile PBS, pH 7.4

1. 5 % trehalose and mannitol are added as protectants before lyophilization.

2. Please contact us for any concerns or special requirements.

## Usage Guide

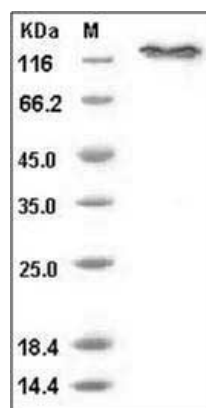
### Storage

Store it under sterile conditions at -20°C to -80°C. It is recommended that the protein be aliquoted for optimal storage. Avoid repeated freeze-thaw cycles.

### Reconstitution

Adding sterile water, prepare a stock solution of 0.25 mg/ml. Concentration is measured by UV-Vis.

### SDS-PAGE



# Human E-Selectin/CD62e/SELE (His & Fc Tag) recombinant protein



Catalog Number: 503508

---

Human E-Selectin / CD62e / SELE Protein (His & Fc Tag) SDS-PAGE