

Human CCL15/MIP-5/MIP-1 delta (aa 22-113? His Tag) recombinant protein



Catalog Number: 503460

General Information

Gene Name Synonym

Chemokine CC-2; Leukotactin-1; MIP-1 delta; Macrophage inflammatory protein 5; Mrp-2b; NCC-3; Small-inducible cytokine A15; CCL15(22-92); CCL15(25-92); CCL15(29-92)

Protein Construction

A DNA sequence encoding the mature form of human CCL15 (Q16663-1) (Gln 22-Ile 113) was expressed, with a polyhistidine tag at the C-terminus.

Organism

Human

Expression Host

E. coli

QC Testing

Purity

> 95 % as determined by SDS-PAGE

Endotoxin

Please contact us for more information.

Stability

Samples are stable for up to twelve months from date of receipt at -70°C

Predicted N terminal

Met

Molecular Mass

The recombinant human CCL15 consisting of 103 amino acids and has a calculated molecular mass of 11.7 kDa. It migrates as an approximately 13 kDa band in SDS-PAGE under reducing conditions.

Formulation

Lyophilized from sterile PBS, pH 7.4

1. 5 % trehalose and mannitol are added as protectants before lyophilization.

2. Please contact us for any concerns or special requirements.

Usage Guide

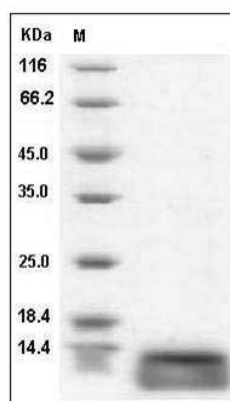
Storage

Store it under sterile conditions at -20°C to -80°C. It is recommended that the protein be aliquoted for optimal storage. Avoid repeated freeze-thaw cycles.

Reconstitution

Adding sterile water, prepare a stock solution of 0.25 mg/ml. Concentration is measured by UV-Vis.

SDS-PAGE



Human CCL15 / MIP-5 / MIP-1 delta Protein (aa 22-113? His Tag) SDS-PAGE