

# Human S100A8 (His Tag) recombinant protein



Catalog Number: 503448

## General Information

### Gene Name Synonym

Calgranulin-A; Calprotectin L1L subunit; Cystic fibrosis antigen; Leukocyte L1 complex light chain; Migration inhibitory factor-related protein 8; S100 calcium-binding protein A8; Urinary stone protein band A; Protein S100-A8, N-terminally processed

### Protein Construction

A DNA sequence encoding the human S100A8 (NP\_002955.2) (Met 1-Glu 93) was expressed, fused with a polyhistidine tag at the C-terminus.

### Organism

Human

### Expression Host

Baculovirus-Insect Cells

## QC Testing

### Activity

Measured by its ability to bind recombinant human S100A9 in a functional ELISA.

### Purity

> 90 % as determined by SDS-PAGE

### Endotoxin

< 1.0 EU per µg of the protein as determined by the LAL method

### Stability

Samples are stable for up to twelve months from date of receipt at -70°C

### Predicted N terminal

Met

### Molecular Mass

The recombinant human S100A8 consists of 103 amino acids and predicts a molecular mass of 12.2 kDa. It migrates as an approximately 14.6 kDa band in SDS-PAGE under reducing conditions.

### Formulation

Lyophilized from sterile 20 mM Tris, 500 mM NaCl, 10 % glycerol, pH 8.0.

1. 5 % trehalose and mannitol are added as protectants before lyophilization.

2. Please contact us for any concerns or special requirements.

## Usage Guide

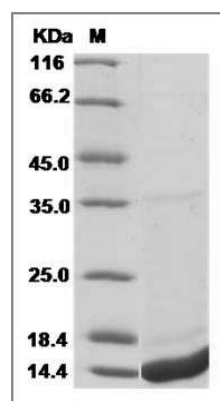
### Storage

Store it under sterile conditions at -20°C to -80°C. It is recommended that the protein be aliquoted for optimal storage. Avoid repeated freeze-thaw cycles.

### Reconstitution

Adding sterile water, prepare a stock solution of 0.25 mg/ml. Concentration is measured by UV-Vis.

### SDS-PAGE



Human S100A8 / CAGA / p8 Protein (His Tag)  
SDS-PAGE