

# Mouse BCHE/Butyrylcholinesterase (His Tag) recombinant protein



Catalog Number: 503411

## General Information

### Gene Name Synonym

Acylcholine acylhydrolase; Butyrylcholine esterase; Choline esterase II; Pseudocholinesterase

### Protein Construction

A DNA sequence encoding the mouse BCHE (NP\_033868.3) (Met 1-Leu 603) was expressed, with a C-terminal polyhistidine tag.

### Organism

Mouse

### Expression Host

Human Cells

## QC Testing

### Activity

Measured by its ability to cleave Butyrylthiocholine. The specific activity is > 70 nmol/min/μg.

### Purity

> 98 % as determined by SDS-PAGE

### Endotoxin

< 1.0 EU per μg of the protein as determined by the LAL method

### Stability

Samples are stable for up to twelve months from date of receipt at -70°C

### Predicted N terminal

His 28

### Molecular Mass

The secreted recombinant mouse BCHE consists of 587 amino acids and has a calculated molecular mass of 66.7 kDa. The apparent molecular mass of the recombinant protein is approximately 60-70 kDa in SDS-PAGE under reducing conditions.

### Formulation

Lyophilized from sterile 25mM Tris, 100mM NaCl, pH 7.5

1. 5 % trehalose and mannitol are added as protectants before lyophilization.

2. Please contact us for any concerns or special requirements.

## Usage Guide

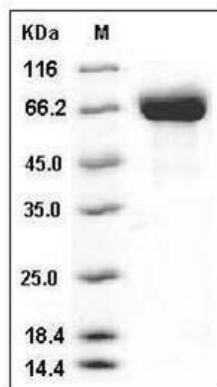
### Storage

Store it under sterile conditions at -20°C to -80°C. It is recommended that the protein be aliquoted for optimal storage. Avoid repeated freeze-thaw cycles.

### Reconstitution

Adding sterile water, prepare a stock solution of 0.25 mg/ml. Concentration is measured by UV-Vis.

### SDS-PAGE



Mouse BCHE / Butyrylcholinesterase Protein (His Tag) SDS-PAGE