

Human M-CSF/CSF-1 (His Tag) recombinant protein



Catalog Number: 503408

General Information

Gene Name Synonym

Lanimostim; Processed macrophage colony-stimulating factor 1

Protein Construction

A DNA sequence encoding the human CSF1 (NP_757349.1) (Glu33-Asn190) was expressed with a polyhistidine tag at the C-terminus.

Organism

Human

Expression Host

Yeast

QC Testing

Activity

Measured in a cell proliferation assay using M-NFS-60 mouse myelogenous leukemia lymphoblast cells.
The ED₅₀ for this effect is typically 1-4 ng/mL.

Purity

> (45.8+27.8+25.7) % as determined by SDS-PAGE.

Endotoxin

Please contact us for more information.

Stability

Samples are stable for up to twelve months from date of receipt at -70°C

Predicted N terminal

Glu 33

Molecular Mass

The recombinant human CSF1 consists 168 amino acids and predicts a molecular mass of 19.8 kDa.

Formulation

Lyophilized from sterile PBS, pH 7.4.

1. 5 % trehalose and mannitol are added as protectants before lyophilization.
2. Please contact us for any concerns or special requirements.

Usage Guide

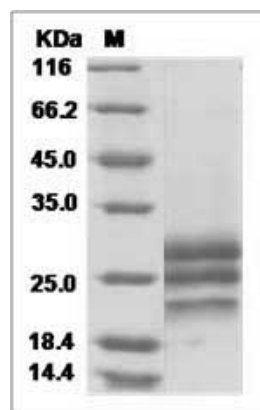
Storage

Store it under sterile conditions at -20°C to -80°C. It is recommended that the protein be aliquoted for optimal storage. Avoid repeated freeze-thaw cycles.

Reconstitution

Adding sterile water, prepare a stock solution of 0.25 mg/ml. Concentration is measured by UV-Vis.

SDS-PAGE



Human M-CSF / CSF-1 Protein (His Tag) SDS-PAGE