

# Human MMP-8 / MMP8 (His Tag) recombinant protein



Catalog Number: 503390

## General Information

### Gene Name Synonym

Matrix metalloproteinase-8; PMNL collagenase

### Protein Construction

A DNA sequence encoding the human MMP8 (NP\_002415.1) (Met 1-Gly 467) was expressed, fused with a polyhistidine tag at the C-terminus.

### Organism

Human

### Expression Host

Human Cells

## QC Testing

### Activity

Measured by its ability to cleave the fluorogenic peptide substrate, Mca-PLGL-Dpa-AR-NH<sub>2</sub> (AnaSpec, Catalog#27076). The specific activity is > 250 pmoles/min/μg.

### Purity

> 90 % as determined by SDS-PAGE

### Endotoxin

< 1.0 EU per μg of the protein as determined by the LAL method

### Stability

Samples are stable for up to twelve months from date of receipt at -70°C

### Predicted N terminal

Phe 21

### Molecular Mass

The recombinant human MMP8 consists of 458 amino acids after removal of the signal peptide and has a predicted molecular mass of 52.6 kDa. In SDS-PAGE under reducing conditions, the apparent molecular mass of rhMMP8 is approximately 65-75 kDa due to glycosylation.

### Formulation

Lyophilized from sterile 50mM Tris, 10mM CaCl<sub>2</sub>, 150mM NaCl, pH 7.5

1. 5 % trehalose and mannitol are added as protectants before lyophilization.
2. Please contact us for any concerns or special requirements.

## Usage Guide

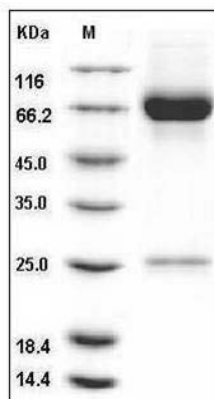
### Storage

Store it under sterile conditions at -20°C to -80°C. It is recommended that the protein be aliquoted for optimal storage. Avoid repeated freeze-thaw cycles.

### Reconstitution

Adding sterile water, prepare a stock solution of 0.25 mg/ml. Concentration is measured by UV-Vis.

### SDS-PAGE



Human MMP8 / CLG1 Protein (His Tag) SDS-PAGE