

# Human ADAM15 (His Tag) recombinant protein



Catalog Number: 503377

## General Information

### Gene Name Synonym

Metalloprotease RGD disintegrin protein;  
Metalloproteinase-like, disintegrin-like, and  
cysteine-rich protein 15; Metargidin

### Protein Construction

A DNA sequence encoding the human ADAM15  
(NP\_997074.1) (Met 1-Thr 696) precursor with a  
C-terminal polyhistidine tag was expressed.

### Organism

Human

### Expression Host

Human Cells

## QC Testing

### Purity

> 97 % as determined by SDS-PAGE

### Endotoxin

< 1.0 EU per  $\mu\text{g}$  of the protein as determined by  
the LAL method

### Stability

Samples are stable for up to twelve months from  
date of receipt at  $-70^{\circ}\text{C}$

### Predicted N terminal

Asp 207

### Molecular Mass

The secreted recombinant human ADAM15

comprises 501 amino acids after proteolytic of the  
signal peptide and pro peptide and has a predicted  
molecular mass of 54 kDa. As a result of  
glycosylation, rh ADAM15 migrates as an  
approximately 65-70 kDa band in SDS-PAGE  
under reducing conditions.

### Formulation

Lyophilized from sterile PBS, pH 7.4

1. 5 % trehalose and mannitol are added as  
protectants before lyophilization.

2. Please contact us for any concerns or special  
requirements.

## Usage Guide

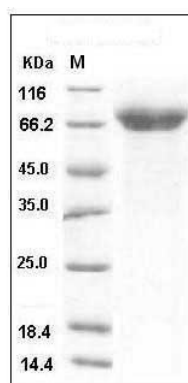
### Storage

Store it under sterile conditions at  $-20^{\circ}\text{C}$  to  $-80^{\circ}\text{C}$ .  
It is recommended that the protein be aliquoted  
for optimal storage. Avoid repeated freeze-thaw  
cycles.

### Reconstitution

Adding sterile water, prepare a stock solution of  
0.25 mg/ml. Concentration is measured by UV-Vis.

### SDS-PAGE



Human ADAM15 / MDC15 Protein (His Tag) SDS-  
PAGE