

Human Tie2/CD202b/TEK (His & Fc Tag) recombinant protein



Catalog Number: 503333

General Information

Gene Name Synonym

Endothelial tyrosine kinase; Tunica interna endothelial cell kinase; Tyrosine kinase with Ig and EGF homology domains-2; Tyrosine-protein kinase receptor TEK; Tyrosine-protein kinase receptor TIE-2; p140 TEK

Protein Construction

A DNA sequence encoding the extracellular domain (Met 1-Lys 745) of human Tie2 (NP_000450.2) precursor was fused with the C-terminal polyhistidine-tagged Fc region of human IgG1 at the C-terminus.

Organism

Human

Expression Host

Human Cells

QC Testing

Activity

Measured by its binding ability in a functional ELISA. Immobilized recombinant human Angiopoietin-2 at 10 µg/ml (100 µl/well) can bind Human Tie2 / Fc chimera with a range of 0.2-20 µg/ml.

Purity

> 90 % as determined by SDS-PAGE

Endotoxin

< 1.0 EU per µg of the protein as determined by the LAL method

Stability

Samples are stable for up to twelve months from date of receipt at -70°C

Predicted N terminal

Ala 23

Molecular Mass

The recombinant human Tie2/Fc is a disulfide-linked homodimeric protein. The reduced monomer consists of 970 amino acids and predicts a molecular mass of 108.5 kDa. As a result of glycosylation, the apparent molecular mass of rhTie2/Fc monomer is approximately 125-135 kDa in SDS-PAGE under reducing conditions.

Formulation

Lyophilized from sterile 100mM Glycine, 10mM NaCl, 50mM Tris, pH 7.5

1. 5 % trehalose and mannitol are added as protectants before lyophilization.
2. Please contact us for any concerns or special requirements.

Usage Guide

Storage

Store it under sterile conditions at -20°C to -80°C. It is recommended that the protein be aliquoted for optimal storage. Avoid repeated freeze-thaw cycles.

Reconstitution

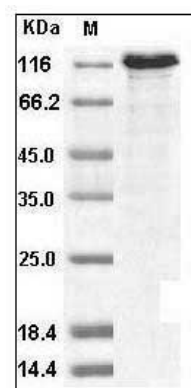
Adding sterile water, prepare a stock solution of 0.25 mg/ml. Concentration is measured by UV-Vis.

SDS-PAGE

Human Tie2?CD202b?/TEK (His & Fc Tag) recombinant protein



Catalog Number: 503333



Human Tie2 / CD202b Protein (His & Fc Tag)
SDS-PAGE