

General Information

Gene Name Synonym

IgLON family member 3

Protein Construction

A DNA sequence encoding the human LSAMP (Q13449) (Met 1-Asn 315), without the pro peptide, was expressed, with a polyhistidine tag at the C-terminus.

Organism

Human

Expression Host

Human Cells

QC Testing

Purity

> 97 % as determined by SDS-PAGE

Endotoxin

< 1.0 EU per μg of the protein as determined by the LAL method

Stability

Samples are stable for up to twelve months from date of receipt at -70°C

Predicted N terminal

Val 29

Molecular Mass

The secreted mature form of recombinant human LSAMP consists of 298 amino acids and has a predicted molecular mass of 33.4 kDa. As a result of glycosylation, the apparent molecular mass of rhLSAMP is approximately 45-55 kDa in SDS-PAGE under reducing conditions.

Formulation

Lyophilized from sterile PBS, pH 7.4

1. 5 % trehalose and mannitol are added as protectants before lyophilization.

2. Please contact us for any concerns or special requirements.

Usage Guide

Storage

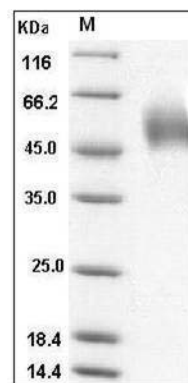
Store it under sterile conditions at -20°C to -80°C .

It is recommended that the protein be aliquoted for optimal storage. Avoid repeated freeze-thaw cycles.

Reconstitution

Adding sterile water, prepare a stock solution of 0.25 mg/ml. Concentration is measured by UV-Vis.

SDS-PAGE



Human LSAMP Protein (His Tag) SDS-PAGE