

Rat CLEC1A / CLEC-1 (Fc Tag) recombinant protein



Catalog Number: 503239

General Information

Gene Name Synonym

Protein Clec1a; Similar to C-type lectin-like receptor-1 (Predicted)

Protein Construction

A DNA sequence encoding the rat CLEC1A (D3ZGU3) (Gln73-Gln269) was expressed, fused with Fc region of human IgG1 at the N-terminus.

Organism

Rat

Expression Host

Human Cells

QC Testing

Purity

> 90 % as determined by SDS-PAGE

Endotoxin

< 1.0 EU per μ g of the protein as determined by the LAL method

Stability

Samples are stable for up to twelve months from date of receipt at -70°C

Predicted N terminal

Glu

Molecular Mass

The recombinant rat CLEC1A comprises 457 amino acids and predicts a molecular mass of 51.6 kDa.

Formulation

Lyophilized from sterile PBS, pH 7.4

1. 5 % trehalose and mannitol are added as protectants before lyophilization.

2. Please contact us for any concerns or special requirements.

Usage Guide

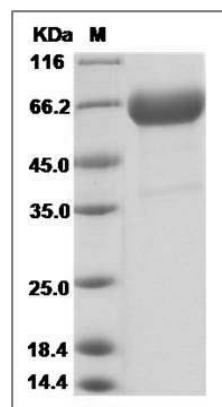
Storage

Store it under sterile conditions at -20°C to -80°C. It is recommended that the protein be aliquoted for optimal storage. Avoid repeated freeze-thaw cycles.

Reconstitution

Adding sterile water, prepare a stock solution of 0.25 mg/ml. Concentration is measured by UV-Vis.

SDS-PAGE



Rat CLEC1A / CLEC-1 Protein (Fc Tag) SDS-PAGE