

# Mouse IL-1R1/CD121a (Fc Tag) recombinant protein



Catalog Number: 503214

## General Information

### Gene Name Synonym

CD121 antigen-like family member A; Interleukin-1 receptor alpha; Interleukin-1 receptor type I; p80; Interleukin-1 receptor type 1, membrane form; Interleukin-1 receptor type 1, soluble form

### Protein Construction

A DNA sequence encoding the mouse IL1R1 (P13504) extracellular domain (Met 1-Lys 338) was fused with the Fc region of human IgG1 at the C-terminus.

### Organism

Mouse

### Expression Host

Human Cells

## QC Testing

### Activity

1. Measured by its binding ability in a functional ELISA.
2. Immobilized recombinant human IL1b (Cat:503648) at 10 µg/mL (100 µl/well) can mouse IL1R1-Fc (Cat:503214) with a linear range of 62.5-1000 ng/mL.

### Purity

> 92 % as determined by SDS-PAGE

### Endotoxin

< 1.0 EU per µg of the protein as determined by the LAL method

### Stability

Samples are stable for up to twelve months from date of receipt at -70°C

## Predicted N terminal

Leu 20

## Molecular Mass

The secreted recombinant mouse IL1R1/Fc is a disulfide-linked homodimer. The reduced monomer comprises 560 amino acids and has a calculated molecular mass of 64.3 kDa. As a result of glycosylation, the apparent molecular mass of the recombinant protein is approximately 70 kDa in SDS-PAGE under reducing conditions.

## Formulation

- Lyophilized from sterile PBS, pH 7.4
1. 5 % trehalose and mannitol are added as protectants before lyophilization.
  2. Please contact us for any concerns or special requirements.

## Usage Guide

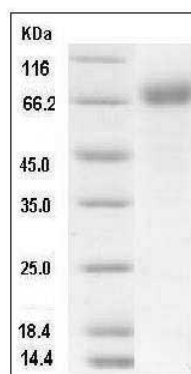
### Storage

Store it under sterile conditions at -20°C to -80°C. It is recommended that the protein be aliquoted for optimal storage. Avoid repeated freeze-thaw cycles.

### Reconstitution

Adding sterile water, prepare a stock solution of 0.25 mg/ml. Concentration is measured by UV-Vis.

## SDS-PAGE



# Mouse IL-1R1/CD121a (Fc Tag) recombinant protein



Catalog Number: 503214

---

Mouse IL1R1 / CD121a Protein (Fc Tag) SDS-

PAGE