

# Human CD116/GM-CSFR (Fc Tag) recombinant protein



Catalog Number: 503181

## General Information

### Gene Name Synonym

CDw116

### Protein Construction

A DNA sequence encoding the extracellular domain (Met 1-Gly 320) of human GM-CSFR? (NP\_006131.2) pro-protein was expressed with the C-terminal fused Fc region of human IgG1.

### Organism

Human

### Expression Host

Human Cells

## QC Testing

### Activity

Measured by its ability to inhibit GM-CSF dependent proliferation of TF-1 human erythroleukemic cells. The ED<sub>50</sub> for this effect is typically 10-15 µg/ml.

### Purity

> 90 % as determined by SDS-PAGE

### Endotoxin

< 1.0 EU per µg of the protein as determined by the LAL method

### Stability

Samples are stable for up to twelve months from date of receipt at -70°C

### Predicted N terminal

Glu 23

### Molecular Mass

The recombinant human GM-CSFR? consists of 536 amino acids and has a predicted molecular mass of 61.2 kDa.

### Formulation

Lyophilized from sterile PBS, pH 7.4

1. 5 % trehalose and mannitol are added as protectants before lyophilization.
2. Please contact us for any concerns or special requirements.

## Usage Guide

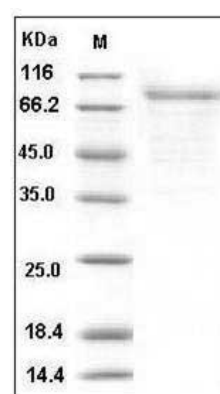
### Storage

Store it under sterile conditions at -20°C to -80°C. It is recommended that the protein be aliquoted for optimal storage. Avoid repeated freeze-thaw cycles.

### Reconstitution

Adding sterile water, prepare a stock solution of 0.25 mg/ml. Concentration is measured by UV-Vis.

### SDS-PAGE



Human CSF2RA / GM-CSFR / CD116 Protein (Fc Tag) SDS-PAGE