

# Mouse EphB1/Eph Receptor B1 (His & GST Tag) recombinant protein



Catalog Number: 503163

## General Information

### Protein Construction

A DNA sequence encoding the cytoplasmic domain (Met 591-Ala 984) of mouse EPHB1 (Q8CBF3-1) was fused with the N-terminal polyhistidine-tagged GST tag at the N-terminus.

### Organism

Mouse

### Expression Host

Baculovirus-Insect Cells

## QC Testing

### Activity

The specific activity was determined to be 234 nmol/min/mg using Poly(Glu,Tyr) 4:1 as substrate.

### Purity

> 95 % as determined by SDS-PAGE

### Endotoxin

< 1.0 EU per  $\mu\text{g}$  of the protein as determined by the LAL method

### Stability

Samples are stable for up to twelve months from date of receipt at  $-70^{\circ}\text{C}$

### Predicted N terminal

Lys 26

### Molecular Mass

The secreted recombinant mouse EPHB1/GST

chimera consists of 631 amino acids and has a calculated molecular mass of 72.4 kDa. The recombinant protein migrates as an approximately 60 kDa band in SDS-PAGE under reducing conditions.

### Formulation

Supplied as sterile 20mM Tris, 500mM NaCl, pH 8.0, 10% gly

1. 5 % trehalose and mannitol are added as protectants before lyophilization.

2. Please contact us for any concerns or special requirements.

## Usage Guide

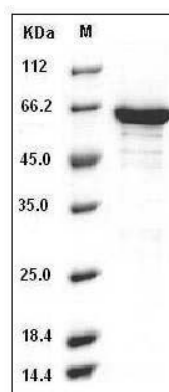
### Storage

Store it under sterile conditions at  $-20^{\circ}\text{C}$  to  $-80^{\circ}\text{C}$ . It is recommended that the protein be aliquoted for optimal storage. Avoid repeated freeze-thaw cycles.

### Reconstitution

Adding sterile water, prepare a stock solution of 0.25 mg/ml. Concentration is measured by UV-Vis.

### SDS-PAGE



Mouse EphB1 / EPHT2 Protein (His & GST Tag)  
SDS-PAGE