

# Mouse Epiregulin/EREG (Fc Tag) recombinant protein



Catalog Number: 503119

## General Information

### Gene Name Synonym

Epiregulin

### Protein Construction

A DNA sequence encoding the mature form of mouse EREG (Q61521) (Val 56-Leu 101) was fused with the Fc region of human IgG1 at the N-terminus.

### Organism

Mouse

### Expression Host

Human Cells

## QC Testing

### Activity

Measured in a cell proliferation assay using Balb/3T3 mouse embryonic fibroblast cells. The ED<sub>50</sub> for this effect is typically 0.1-0.5 µg/mL.

### Purity

> 95 % as determined by SDS-PAGE

### Endotoxin

< 1.0 EU per µg of the protein as determined by the LAL method

### Stability

Samples are stable for up to twelve months from date of receipt at -70°C

### Predicted N terminal

Glu

### Molecular Mass

The recombinant mouse EREG/Fc is a disulfide-linked homodimeric protein. The reduced monomer consists of 306 amino acids and has a predicted molecular mass of 33.8 kDa. In SDS-PAGE under reducing conditions, the apparent molecular mass of rmEREG/Fc monomer is approximately 37 kDa.

### Formulation

- Lyophilized from sterile PBS, pH 7.4
1. 5 % trehalose and mannitol are added as protectants before lyophilization.
  2. Please contact us for any concerns or special requirements.

## Usage Guide

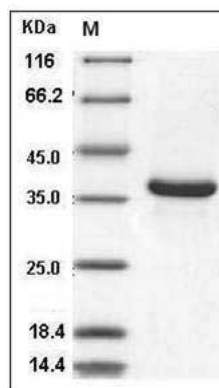
### Storage

Store it under sterile conditions at -20°C to -80°C. It is recommended that the protein be aliquoted for optimal storage. Avoid repeated freeze-thaw cycles.

### Reconstitution

Adding sterile water, prepare a stock solution of 0.25 mg/ml. Concentration is measured by UV-Vis.

### SDS-PAGE



Mouse Epiregulin / EREG Protein (Fc Tag) SDS-PAGE