

# Human PI3/Elafin/WFDC14 (His Tag) recombinant protein



Catalog Number: 503066

## General Information

### Gene Name Synonym

Elastase-specific inhibitor; Peptidase inhibitor 3;  
Protease inhibitor WAP3; Skin-derived  
antileukoproteinase; WAP four-disulfide core  
domain protein 14

### Protein Construction

A DNA sequence encoding the human PI3  
(NP\_002629.1) (Met 1-Gln 117) was fused with a  
polyhistidine tag at the C-terminus.

### Organism

Human

### Expression Host

Human Cells

## QC Testing

### Purity

> 92 % as determined by SDS-PAGE

### Endotoxin

< 1.0 EU per  $\mu\text{g}$  of the protein as determined by  
the LAL method

### Stability

Samples are stable for up to twelve months from  
date of receipt at  $-70^{\circ}\text{C}$

### Predicted N terminal

Ala 23

### Molecular Mass

The recombinant human PI3 consists of 106 amino  
acids and has a predicted molecular mass of 11.3  
kDa. In SDS-PAGE under reducing conditions, the  
apparent molecular mass of rh PI3 is  
approximately 13-16 kDa.

### Formulation

Lyophilized from sterile PBS, pH 7.4

1. 5 % trehalose and mannitol are added as  
protectants before lyophilization.

2. Please contact us for any concerns or special  
requirements.

## Usage Guide

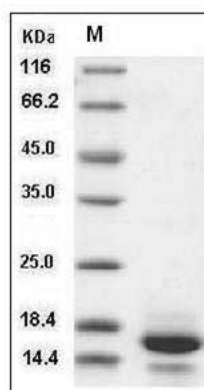
### Storage

Store it under sterile conditions at  $-20^{\circ}\text{C}$  to  $-80^{\circ}\text{C}$ .  
It is recommended that the protein be aliquoted  
for optimal storage. Avoid repeated freeze-thaw  
cycles.

### Reconstitution

Adding sterile water, prepare a stock solution of  
0.25 mg/ml. Concentration is measured by UV-Vis.

### SDS-PAGE



Human PI3 / Elafin / WFDC14 Protein (His Tag)  
SDS-PAGE