

# Human SRPK1 (His & GST Tag) recombinant protein



Catalog Number: 503039

## General Information

### Gene Name Synonym

SFRS protein kinase 1; Serine/arginine-rich protein-specific kinase 1

### Protein Construction

A DNA sequence encoding the human SRPK1 (AAH38292.1) (Glu 2-Ser 655) was fused with the N-terminal polyhistidine-tagged GST tag at the N-terminus.

### Organism

Human

### Expression Host

Baculovirus-Insect Cells

## QC Testing

### Activity

No Kinase Activity

### Purity

> 80 % as determined by SDS-PAGE

### Endotoxin

< 1.0 EU per  $\mu\text{g}$  of the protein as determined by the LAL method

### Stability

Samples are stable for up to twelve months from date of receipt at  $-70^{\circ}\text{C}$

### Predicted N terminal

Met

### Molecular Mass

The recombinant human SRPK1/GST chimera consists of 892 amino acids and has a calculated molecular mass of 102 kDa. It migrates as an approximately 120 kDa band in SDS-PAGE under reducing conditions.

### Formulation

Lyophilized from sterile 20mM Tris, 500mM NaCl, 2mM GSH, 10% gly, pH 7.4

1. 5 % trehalose and mannitol are added as protectants before lyophilization.

2. Please contact us for any concerns or special requirements.

## Usage Guide

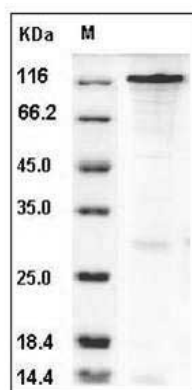
### Storage

Store it under sterile conditions at  $-20^{\circ}\text{C}$  to  $-80^{\circ}\text{C}$ . It is recommended that the protein be aliquoted for optimal storage. Avoid repeated freeze-thaw cycles.

### Reconstitution

Adding sterile water, prepare a stock solution of 0.25 mg/ml. Concentration is measured by UV-Vis.

### SDS-PAGE



Human SRPK1 Protein (His & GST Tag) SDS-PAGE