

## General Information

### Gene Name Synonym

Methyltransferase-like protein 1; tRNA (guanine(46)-N(7))-methyltransferase; tRNA(m7G46)-methyltransferase

### Protein Construction

A DNA sequence encoding the human METTL1 (NP\_005362.3) (Asp 32-Gln 265) was expressed, with a polyhistidine tag at the N-terminus.

### Organism

Human

### Expression Host

E. coli

## QC Testing

### Purity

> 95 % as determined by SDS-PAGE

### Endotoxin

Please contact us for more information.

### Stability

Samples are stable for up to twelve months from date of receipt at -70°C

### Predicted N terminal

Met

### Molecular Mass

The recombinant human METTL1 consisting of 241 amino acids and has a calculated molecular mass of 28 kDa. It migrates as an approximately 30 kDa band in SDS-PAGE under reducing conditions.

### Formulation

Lyophilized from sterile 50mM Tris, 0.5M NaCl, 20% glycerol, pH 8.0

1. 5 % trehalose and mannitol are added as protectants before lyophilization.
2. Please contact us for any concerns or special requirements.

## Usage Guide

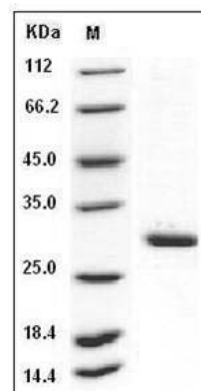
### Storage

Store it under sterile conditions at -20°C to -80°C. It is recommended that the protein be aliquoted for optimal storage. Avoid repeated freeze-thaw cycles.

### Reconstitution

Adding sterile water, prepare a stock solution of 0.25 mg/ml. Concentration is measured by UV-Vis.

### SDS-PAGE



Human METTL1 Protein (His Tag) SDS-PAGE