

Human Syndecan-2/SDC2 (His Tag) recombinant protein



Catalog Number: 502987

General Information

Protein Construction

A DNA sequence encoding the human SDC2 (NP_002989.2) (Met1-Glu144) was expressed with a polyhistidine tag at the C-terminus.

Organism

Human

Expression Host

Human Cells

QC Testing

Purity

> 85 % as determined by SDS-PAGE.

Endotoxin

< 1.0 EU per μg protein as determined by the LAL method.

Stability

Samples are stable for up to twelve months from date of receipt at -70°C

Predicted N terminal

Glu 19

Molecular Mass

The recombinant human SDC2 consists 137 amino

acids and predicts a molecular mass of 15.4 kDa.

Formulation

Lyophilized from sterile PBS, pH 7.4.

1. 5 % trehalose and mannitol are added as protectants before lyophilization.

2. Please contact us for any concerns or special requirements.

Usage Guide

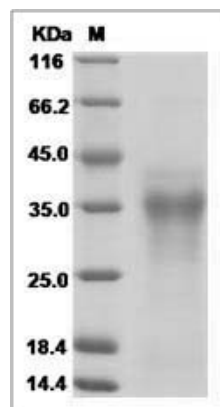
Storage

Store it under sterile conditions at -20°C to -80°C . It is recommended that the protein be aliquoted for optimal storage. Avoid repeated freeze-thaw cycles.

Reconstitution

Adding sterile water, prepare a stock solution of 0.25 mg/ml. Concentration is measured by UV-Vis.

SDS-PAGE



Human Syndecan-2 / SDC2 Protein (His Tag)