

Canine CD2 (Fc Tag) recombinant protein



Catalog Number: 502929

General Information

Protein Construction

A DNA sequence encoding the canine CD2 (XP_849219.1) (Met1-Gly204) was expressed with the Fc region of human IgG1 at the C-terminus.

Organism

Canine

Expression Host

Human Cells

QC Testing

Purity

> 95 % as determined by SDS-PAGE

Endotoxin

< 1.0 EU per μ g of the protein as determined by the LAL method

Stability

Samples are stable for up to twelve months from date of receipt at -70°C

Predicted N terminal

Glu 22

Molecular Mass

The recombinant canine CD2/Fc is a disulfide-linked homodimer. The reduced monomer comprises 421 amino acids and has a predicted

molecular mass of 47.6 kDa. The apparent molecular mass of the protein is approximately 64.4 kDa in SDS-PAGE under reducing conditions.

Formulation

Lyophilized from sterile PBS, pH 7.4.

1. 5 % trehalose and mannitol are added as protectants before lyophilization.

2. Please contact us for any concerns or special requirements.

Usage Guide

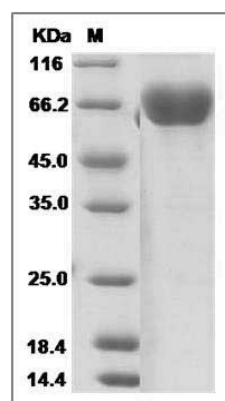
Storage

Store it under sterile conditions at -20°C to -80°C. It is recommended that the protein be aliquoted for optimal storage. Avoid repeated freeze-thaw cycles.

Reconstitution

Adding sterile water, prepare a stock solution of 0.25 mg/ml. Concentration is measured by UV-Vis.

SDS-PAGE



Canine CD2 Protein (Fc Tag) SDS-PAGE