

# Mouse Renin (His Tag) recombinant protein



Catalog Number: 502823

## General Information

### Gene Name Synonym

Angiotensinogenase; Kidney renin

### Protein Construction

A DNA sequence encoding the pro form of mouse REN1 (NP\_112469.1) (Met 1-Arg 402) was fused with a polyhistidine tag at the C-terminus.

### Organism

Mouse

### Expression Host

Human Cells

## QC Testing

### Activity

1. Measured by its ability to cleave the fluorogenic peptide substrate 5FAM/QXL™ 520 (PetiPeterdi, J. et al., 2009, Physiology 24:88.). The specific activity is > 20 pmoles/min/μg.
2. Immobilized mouse REN1-His (Cat: 502823) at 10ug/ml (100 μl/well) can bind biotinylated human AGT-His (Cat: 501652) with a linear range of 31.25-250 ng/ml.

### Purity

> 97 % as determined by SDS-PAGE

### Endotoxin

< 1.0 EU per μg of the protein as determined by the LAL method

### Stability

Samples are stable for up to twelve months from date of receipt at -70°C

### Predicted N terminal

Leu 22

## Molecular Mass

The recombinant mouse REN1 consists of 392 amino acids and has a predicted molecular mass of 43.2 kDa. As a result of glycosylation, the apparent molecular mass of rmREN1 is approximately 48-55 kDa in SDS-PAGE under reducing conditions.

## Formulation

Lyophilized from sterile PBS, pH 7.4

1. 5 % trehalose and mannitol are added as protectants before lyophilization.

2. Please contact us for any concerns or special requirements.

## Usage Guide

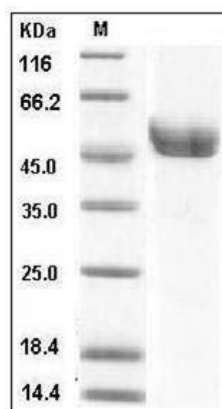
### Storage

Store it under sterile conditions at -20°C to -80°C. It is recommended that the protein be aliquoted for optimal storage. Avoid repeated freeze-thaw cycles.

### Reconstitution

Adding sterile water, prepare a stock solution of 0.25 mg/ml. Concentration is measured by UV-Vis.

### SDS-PAGE



Mouse REN1 / Renin-1 Protein (His Tag) SDS-PAGE