

# Human PSMA3 / Proteasome 20S alpha 3 (His Tag) recombinant protein



Catalog Number: 502817

## General Information

### Gene Name Synonym:

Macropain subunit C8; Multicatalytic endopeptidase complex subunit C8; Proteasome component C8

### Protein Construction:

A DNA sequence encoding the human PSMA3 (AAH29402.1) (Met1-Met255) was expressed with a polyhistidine tag at the N-terminus.

**Source:** Human

**Expression Host:** E. coli

## QC Testing

**Activity:**

**Purity:**

> 95 % as determined by SDS-PAGE

**Endotoxin:**

Please contact us for more information.

**Stability:**

Samples are stable for up to twelve months from date of receipt at -70°C

**Predicted N terminal:**

His

**Molecular Mass:**

The recombinant human PSMA3 consists of 273

amino acids and predicts a molecular mass of 30.7 KDa. It migrates as an approximately 33 KDa band in SDS-PAGE under reducing conditions.

### Formulation:

Lyophilized from sterile PBS, pH 7.4.

1. 5 % trehalose and mannitol are added as protectants before lyophilization.

2. Please contact us for any concerns or special requirements.

## Usage Guide

### Storage:

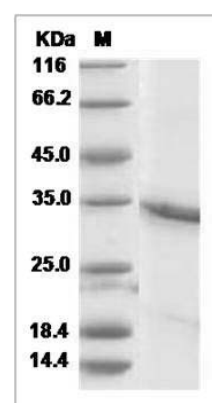
Store it under sterile conditions at -20°C to -80°C.

It is recommended that the protein be aliquoted for optimal storage. Avoid repeated freeze-thaw cycles.

### Reconstitution:

Adding sterile water, prepare a stock solution of 0.25 mg/ml. Concentration is measured by UV-Vis.

### SDS-PAGE:



Human PSMA3 / Proteasome 20S alpha 3 Protein (His Tag) SDS-PAGE