

## General Information

### Gene Name Synonym

Group IB phospholipase A2; Phosphatidylcholine 2-acylhydrolase 1B

### Protein Construction

A DNA sequence encoding the human PLA2G1B (NP\_000919.1) (Met 1-Ser 148) with a C-terminal polyhistidine tag was expressed.

### Organism

Human

### Expression Host

Human Cells

## QC Testing

### Activity

Measured by its ability to hydrolyze 1-Hexadecanoyl-2-(1-pyrenedecanoyl)-sn-glycero-3-phosphomethanol.

The specific activity is >2,500 pmol/min/μg.

### Purity

> 92 % as determined by SDS-PAGE

### Endotoxin

< 1.0 EU per μg of the protein as determined by the LAL method

### Stability

Samples are stable for up to twelve months from date of receipt at -70°C

### Predicted N terminal

Asp 16

### Molecular Mass

The recombinant human PLA2G1B comprises 144 amino acids after removal of the signal peptide, and has a predicted molecular mass of 16.2 kDa. rh PLA2G1B migrates as an approximately 19 kDa band in SDS-PAGE under reducing conditions.

### Formulation

Lyophilized from sterile 10mM Tris, 5mM CaCl<sub>2</sub>, pH 8.0

1. 5 % trehalose and mannitol are added as protectants before lyophilization.

2. Please contact us for any concerns or special requirements.

## Usage Guide

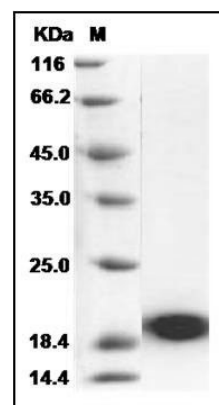
### Storage

Store it under sterile conditions at -20°C to -80°C. It is recommended that the protein be aliquoted for optimal storage. Avoid repeated freeze-thaw cycles.

### Reconstitution

Adding sterile water, prepare a stock solution of 0.25 mg/ml. Concentration is measured by UV-Vis.

### SDS-PAGE



Human PLA2G1B / PLA2 Protein (His Tag) SDS-PAGE