

# Rat Carboxypeptidase A2/CPA2 (His Tag) recombinant protein



Catalog Number: 502756

## General Information

### Gene Name Synonym

Carboxypeptidase A2 (Pancreatic) (Predicted),  
isoform CRA\_b

### Protein Construction

A DNA sequence encoding the rat Cpa2  
(NP\_001013101.2) (Met1-Tyr417) was expressed  
with a polyhistidine tag at the C-terminus.

### Organism

Rat

### Expression Host

Human Cells

## QC Testing

### Purity

> 90 % as determined by SDS-PAGE

### Endotoxin

< 1.0 EU per  $\mu\text{g}$  protein as determined by the LAL  
method.

### Stability

Samples are stable for up to twelve months from  
date of receipt at  $-70^{\circ}\text{C}$

### Predicted N terminal

Gln 17

### Molecular Mass

The recombinant rat Cpa2 consists 412 amino  
acids and predicts a molecular mass of 46.5 kDa.

### Formulation

Lyophilized from sterile PBS, pH 7.4.

1. 5 % trehalose and mannitol are added as  
protectants before lyophilization.

2. Please contact us for any concerns or special  
requirements.

## Usage Guide

### Storage

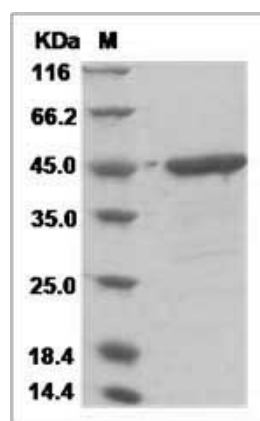
Store it under sterile conditions at  $-20^{\circ}\text{C}$  to  $-80^{\circ}\text{C}$ .

It is recommended that the protein be aliquoted  
for optimal storage. Avoid repeated freeze-thaw  
cycles.

### Reconstitution

Adding sterile water, prepare a stock solution of  
0.25 mg/ml. Concentration is measured by UV-Vis.

### SDS-PAGE



Rat Carboxypeptidase A2 / CPA2 Protein (His Tag)