

# Human KNG1/Kininogen 1 (His Tag) recombinant protein



Catalog Number: 502747

## General Information

### Gene Name Synonym

Alpha-2-thiol proteinase inhibitor; Fitzgerald factor; High molecular weight kininogen; Williams-Fitzgerald-Flaujeac factor; Kininogen-1 heavy chain; T-kinin; Ile-Ser-Bradykinin; Bradykinin; Kallidin I; Lysyl-bradykinin; Kallidin II; Kininogen-1 light chain; Low molecular weight growth-promoting factor

### Protein Construction

A DNA sequence encoding the human KNG1 isoform 1 (NP\_001095886.1) (Gln 19-Ser 644) was fused with a polyhistidine tag at the C-terminus, and a signal peptide at the N-terminus.

### Organism

Human

### Expression Host

Human Cells

## QC Testing

### Activity

Measured by its ability to inhibit papain cleavage of a fluorogenic peptide substrate Z-FR-AMC, R&D Systems, Catalog # ES009. The IC<sub>50</sub> value is < 7 nM.

### Purity

> 85 % as determined by SDS-PAGE

### Endotoxin

< 1.0 EU per µg of the protein as determined by the LAL method

### Stability

Samples are stable for up to twelve months from date of receipt at -70°C

## Predicted N terminal

Gln 19

## Molecular Mass

The recombinant human KNG1 consists of 637 amino acids and has a predicted molecular mass of 71.3 kDa. As a result of glycosylation, the apparent molecular mass of rhKNG1 is approximately 100-110 kDa in SDS-PAGE under reducing conditions.

## Formulation

Lyophilized from sterile 25mM Tris, 100mM NaCl, pH 7.5

1. 5 % trehalose and mannitol are added as protectants before lyophilization.
2. Please contact us for any concerns or special requirements.

## Usage Guide

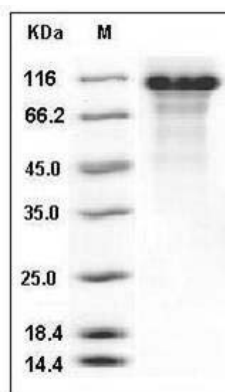
### Storage

Store it under sterile conditions at -20°C to -80°C. It is recommended that the protein be aliquoted for optimal storage. Avoid repeated freeze-thaw cycles.

### Reconstitution

Adding sterile water, prepare a stock solution of 0.25 mg/ml. Concentration is measured by UV-Vis.

## SDS-PAGE



# Human KNG1/Kininogen 1 (His Tag) recombinant protein



Catalog Number: 502747

---

Human KNG1 / BDK / Kininogen-1 Protein (His Tag) SDS-PAGE