

# Canine IL-1R2/CD121b (Fc Tag) recombinant protein



Catalog Number: 502733

## General Information

### Protein Construction

A DNA sequence encoding the canine IL1R2 (E2RKW1) (Met1-Glu343) was expressed with the Fc region of human IgG1 at the C-terminus.

### Organism

Canine

### Expression Host

Human Cells

## QC Testing

### Activity

Measured by its binding ability in a functional ELISA.

Immobilized Canine IL1R2-Fc3 at 10 µg/ml (100 µl/well) can bind biotinylated human IL1B-His (Cat:501519), The EC<sub>50</sub> of biotinylated human IL1B-His (Cat:501519) is 0.08-0.2 µg/ml.

### Purity

> 90 % as determined by SDS-PAGE

### Endotoxin

< 1.0 EU per µg of the protein as determined by the LAL method

### Stability

Samples are stable for up to twelve months from date of receipt at -70°C

### Predicted N terminal

Phe 14

### Molecular Mass

The recombinant canine IL1R2/Fc is a disulfide-linked homodimer. The reduced monomer comprises 571 amino acids and has a predicted molecular mass of 64.8 kDa. The apparent molecular mass of the protein is approximately 65-70 kDa in SDS-PAGE under reducing conditions.

### Formulation

Lyophilized from sterile PBS, pH 7.4.

1. 5 % trehalose and mannitol are added as protectants before lyophilization.

2. Please contact us for any concerns or special requirements.

## Usage Guide

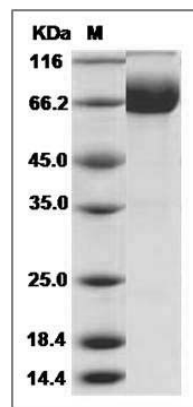
### Storage

Store it under sterile conditions at -20°C to -80°C. It is recommended that the protein be aliquoted for optimal storage. Avoid repeated freeze-thaw cycles.

### Reconstitution

Adding sterile water, prepare a stock solution of 0.25 mg/ml. Concentration is measured by UV-Vis.

### SDS-PAGE



Canine IL1R2 / IL1RB Protein (Fc Tag) SDS-PAGE