

Human EPDR1 (His Tag) recombinant protein



Catalog Number: 502700

General Information

Gene Name Synonym

Upregulated in colorectal cancer gene 1 protein

Protein Construction

A DNA sequence encoding the human EPDR1 (Q9UM22-1) (Met1-Trp224) with a C-terminal polyhistidine tag was expressed.

Organism

Human

Expression Host

Human Cells

QC Testing

Purity

(23.6+72.7) % as determined by SDS-PAGE

Endotoxin

< 1.0 EU per μg of the protein as determined by the LAL method

Stability

Samples are stable for up to twelve months from date of receipt at -70°C

Predicted N terminal

Ala 38

Molecular Mass

The recombinant human EPDR1 comprises 198 amino acids and has a predicted molecular mass of 23.2 kDa. The apparent molecular mass of the protein is approximately 31 and 34 kDa in SDS-PAGE under reducing conditions

Formulation

Lyophilized from sterile PBS, pH 7.4.

1. 5 % trehalose and mannitol are added as protectants before lyophilization.
2. Please contact us for any concerns or special requirements.

Usage Guide

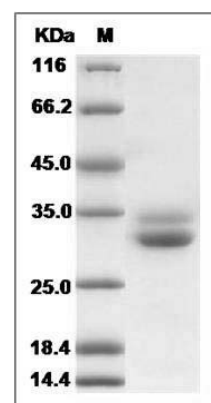
Storage

Store it under sterile conditions at -20°C to -80°C . It is recommended that the protein be aliquoted for optimal storage. Avoid repeated freeze-thaw cycles.

Reconstitution

Adding sterile water, prepare a stock solution of 0.25 mg/ml. Concentration is measured by UV-Vis.

SDS-PAGE



Human EPDR1 Protein (His Tag) SDS-PAGE