

Rhesus CD208/DC-LAMP (His Tag) recombinant protein



Catalog Number: 502666

General Information

Gene Name Synonym

DC-lysosome-associated membrane glycoprotein

Protein Construction

A DNA sequence encoding the rhesus LAMP3 (Q8MJJ2) (Lys28-Thr381) was expressed with a polyhistidine tag at the C-terminus.

Organism

Rhesus

Expression Host

Human Cells

QC Testing

Purity

> 95 % as determined by SDS-PAGE

Endotoxin

< 1.0 EU per μg of the protein as determined by the LAL method

Stability

Samples are stable for up to twelve months from date of receipt at -70°C

Predicted N terminal

Lys 28

Molecular Mass

The recombinant rhesus LAMP3 comprises 365 amino acids and has a calculated molecular mass of 39 KDa.

Formulation

Lyophilized from sterile PBS, PH 7.4.

1. 5 % trehalose and mannitol are added as protectants before lyophilization.

2. Please contact us for any concerns or special requirements.

Usage Guide

Storage

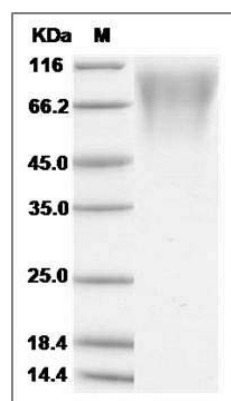
Store it under sterile conditions at -20°C to -80°C .

It is recommended that the protein be aliquoted for optimal storage. Avoid repeated freeze-thaw cycles.

Reconstitution

Adding sterile water, prepare a stock solution of 0.25 mg/ml. Concentration is measured by UV-Vis.

SDS-PAGE



Cynomolgus LAMP3 / DC-LAMP Protein (His Tag)
SDS-PAGE