

# Mouse KIRREL1/NEPH1 (His Tag) recombinant protein



Catalog Number: 502644

## General Information

### Gene Name Synonym

Kin of irregular chiasm-like protein 1; Nephrin-like protein 1

### Protein Construction

A DNA sequence encoding the extracellular domain of mouse KIRREL1 (NP\_570937.2) (Met 1-Leu 525) was expressed with a C-terminal polyhistidine tag.

### Organism

Mouse

### Expression Host

Human Cells

## QC Testing

### Activity

Measured by the ability of the immobilized protein to support the adhesion of MS1 mouse pancreatic islet endothelial cells (ATCC: CRL2279).

When cells are added to KIRREL1 coated plates (30 µg/mL, 100 µL/well), > 40% cells will adhere specifically after 90 minutes at 37 °C.

### Purity

> 98 % as determined by SDS-PAGE

### Endotoxin

< 1.0 EU per µg of the protein as determined by the LAL method

### Stability

Samples are stable for up to twelve months from date of receipt at -70°C

### Predicted N terminal

Leu 48

## Molecular Mass

The secreted recombinant mouse KIRREL1 consists of 489 amino acids and has a calculated molecular mass of 53.8 kDa. As a result of glycosylation, the recombinant protein migrates as an approximately 65-70 kDa protein in SDS-PAGE under reducing conditions.

## Formulation

Lyophilized from sterile PBS, pH 7.4

1. 5 % trehalose and mannitol are added as protectants before lyophilization.

2. Please contact us for any concerns or special requirements.

## Usage Guide

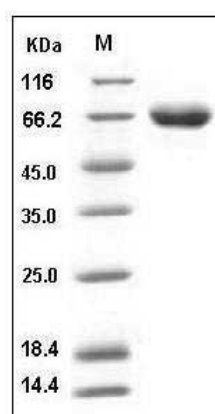
### Storage

Store it under sterile conditions at -20°C to -80°C. It is recommended that the protein be aliquoted for optimal storage. Avoid repeated freeze-thaw cycles.

### Reconstitution

Adding sterile water, prepare a stock solution of 0.25 mg/ml. Concentration is measured by UV-Vis.

### SDS-PAGE



Mouse KIRREL1 / NEPH1 Protein (His Tag) SDS-PAGE