

# Human PSGL-1/CD162 (His Tag) recombinant protein



Catalog Number: 502598

## General Information

### Gene Name Synonym

Selectin P ligand

### Protein Construction

A DNA sequence encoding the human SELPLG (Q14242) (Met1-Gly295) with a C-terminal polyhistidine tag was expressed.

### Organism

Human

### Expression Host

Human Cells

## QC Testing

### Purity

(82+15.2) % as determined by SDS-PAGE

### Endotoxin

< 1.0 EU per µg of the protein as determined by the LAL method

### Stability

Samples are stable for up to twelve months from date of receipt at -70°C

### Predicted N terminal

Leu 18

### Molecular Mass

The recombinant human SELPLG comprises 289

amino acids and has a predicted molecular mass of 30.5 kDa. The apparent molecular mass of the protein is approximately 89 and 61 kDa in SDS-PAGE under reducing conditions.

### Formulation

Lyophilized from sterile PBS, pH 7.4.

1. 5 % trehalose and mannitol are added as protectants before lyophilization.

2. Please contact us for any concerns or special requirements.

## Usage Guide

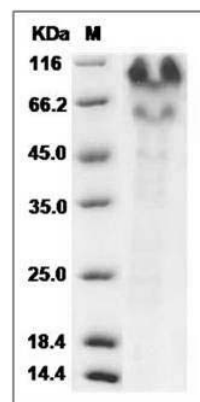
### Storage

Store it under sterile conditions at -20°C to -80°C. It is recommended that the protein be aliquoted for optimal storage. Avoid repeated freeze-thaw cycles.

### Reconstitution

Adding sterile water, prepare a stock solution of 0.25 mg/ml. Concentration is measured by UV-Vis.

### SDS-PAGE



Human PSGL-1 / CD162 / SELPLG Protein (His Tag) SDS-PAGE