

# Human C1 inhibitor/SerpinG1 (His Tag) recombinant protein



Catalog Number: 502576

## General Information

### Protein Construction

A DNA sequence encoding the human SERPING1 (NP\_000053.2) precursor (Met 1-Ala 500) was expressed with a polyhistidine tag at the C-terminus.

### Organism

Human

### Expression Host

Human Cells

## QC Testing

### Activity

Measured by its ability to inhibit recombinant human complement component C1s (Catalog # 2060-SE) cleavage of a colorimetric peptide substrate, N-carbobenzyloxy-Lys-ThioBenzyl ester (Z-K-SBzl). The IC<sub>50</sub> is < 3 nM.

### Purity

> 95 % as determined by SDS-PAGE

### Endotoxin

< 1.0 EU per µg of the protein as determined by the LAL method

### Stability

Samples are stable for up to twelve months from date of receipt at -70°C

### Predicted N terminal

Asn 23

### Molecular Mass

The secreted recombinant human SERPING1 consists of 489 amino acids and predicts a molecular mass of 54.3 kDa. In SDS-PAGE under reducing conditions, it migrates with the apparent molecular mass of 110 kDa due to glycosylation.

### Formulation

Lyophilized from sterile PBS, pH 7.4

1. 5 % trehalose and mannitol are added as protectants before lyophilization.

2. Please contact us for any concerns or special requirements.

## Usage Guide

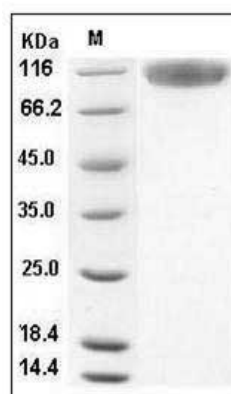
### Storage

Store it under sterile conditions at -20°C to -80°C. It is recommended that the protein be aliquoted for optimal storage. Avoid repeated freeze-thaw cycles.

### Reconstitution

Adding sterile water, prepare a stock solution of 0.25 mg/ml. Concentration is measured by UV-Vis.

### SDS-PAGE



Human SerpinG1 / C1 inhibitor / C1IN Protein  
(His Tag) SDS-PAGE