

# Human Adrenomedullin / ADM (Fc Tag) recombinant protein



Catalog Number: 502548

## General Information

### Gene Name Synonym

Adrenomedullin; Proadrenomedullin N-20 terminal peptide; ProAM N-terminal 20 peptide

### Protein Construction

A DNA sequence encoding the human ADM (P35318) (Tyr95-Tyr146) was expressed, with the fused Fc region of human IgG1 at the N-terminus.

### Organism

Human

### Expression Host

Human Cells

## QC Testing

### Purity

> 93 % as determined by SDS-PAGE

### Endotoxin

< 1.0 EU per  $\mu\text{g}$  of the protein as determined by the LAL method

### Stability

Samples are stable for up to twelve months from date of receipt at  $-70^{\circ}\text{C}$

### Predicted N terminal

Glu

### Molecular Mass

The recombinant human ADM/Fc is a disulfide-linked homodimer. The reduced monomer

comprises 340 amino acids and has a predicted molecular mass of 38 kDa. The apparent molecular mass of the protein is approximately 39 in SDS-PAGE under reducing conditions due to glycosylation.

### Formulation

Lyophilized from sterile PBS, pH 7.4

1. 5 % trehalose and mannitol are added as protectants before lyophilization.

2. Please contact us for any concerns or special requirements.

## Usage Guide

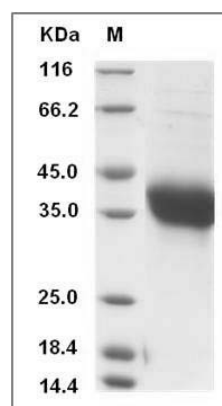
### Storage

Store it under sterile conditions at  $-20^{\circ}\text{C}$  to  $-80^{\circ}\text{C}$ . It is recommended that the protein be aliquoted for optimal storage. Avoid repeated freeze-thaw cycles.

### Reconstitution

Adding sterile water, prepare a stock solution of 0.25 mg/ml. Concentration is measured by UV-Vis.

### SDS-PAGE



Human ADM / Adrenomedullin Protein (Fc Tag)  
SDS-PAGE