

Rhesus CD160 (His Tag) recombinant protein



Catalog Number: 502447

General Information

Protein Construction

A DNA sequence encoding the rhesus CD160 (XP_001089019.1) (Met1-Leu158) was expressed with a polyhistidine tag at the C-terminus.

Organism

Rhesus

Expression Host

Human Cells

QC Testing

Purity

(70+22.5) % as determined by SDS-PAGE

Endotoxin

< 1.0 EU per μ g of the protein as determined by the LAL method

Stability

Samples are stable for up to twelve months from date of receipt at -70°C

Predicted N terminal

Gly 25

Molecular Mass

The recombinant rhesus CD160 comprises 145

amino acids and has a calculated molecular mass of 16.3 KDa.

Formulation

Lyophilized from sterile PBS, pH 7.4.

1. 5 % trehalose and mannitol are added as protectants before lyophilization.

2. Please contact us for any concerns or special requirements.

Usage Guide

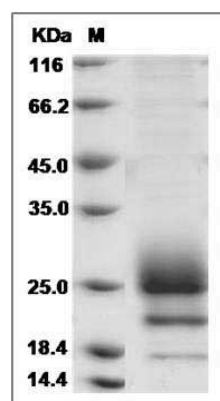
Storage

Store it under sterile conditions at -20°C to -80°C. It is recommended that the protein be aliquoted for optimal storage. Avoid repeated freeze-thaw cycles.

Reconstitution

Adding sterile water, prepare a stock solution of 0.25 mg/ml. Concentration is measured by UV-Vis.

SDS-PAGE



Cynomolgus CD160 Protein (His Tag) SDS-PAGE