

# Rat Prolactin-8A9 / PLP-C beta (His Tag) recombinant protein



Catalog Number: 502351

## General Information

### Gene Name Synonym

Placental prolactin-like protein C2; Prolactin-like protein C-beta

### Protein Construction

A DNA sequence encoding the rat Prl8a9 (NP\_599212.1) (Met1-Cys241) was expressed with a polyhistidine tag at the C-terminus.

### Organism

Rat

### Expression Host

Human Cells

## QC Testing

### Purity

> 90 % as determined by SDS-PAGE.

### Endotoxin

< 1.0 EU per  $\mu\text{g}$  protein as determined by the LAL method.

### Stability

Samples are stable for up to twelve months from date of receipt at  $-70^{\circ}\text{C}$

### Predicted N terminal

Ile 31

## Molecular Mass

The recombinant rat Prl8a9 consists 222 amino acids and predicts a molecular mass of 25.8 kDa.

## Formulation

Lyophilized from sterile PBS, pH 7.4.

1. 5 % trehalose and mannitol are added as protectants before lyophilization.
2. Please contact us for any concerns or special requirements.

## Usage Guide

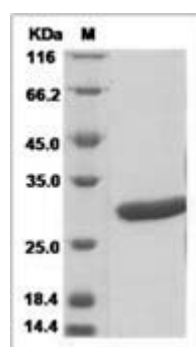
### Storage

Store it under sterile conditions at  $-20^{\circ}\text{C}$  to  $-80^{\circ}\text{C}$ . It is recommended that the protein be aliquoted for optimal storage. Avoid repeated freeze-thaw cycles.

### Reconstitution

Adding sterile water, prepare a stock solution of 0.25 mg/ml. Concentration is measured by UV-Vis.

## SDS-PAGE



Rat Prolactin-8A9 / PLP-C beta / PRL8A9 Protein (His Tag)