

# Human ESM1 (His Tag) recombinant protein



Catalog Number: 502348

## General Information

### Protein Construction

A DNA sequence encoding the human ESM1 (NP\_008967.1) (Met1-Arg184) was expressed with a C-terminal polyhistidine tag.

### Organism

Human

### Expression Host

Baculovirus-Insect Cells

## QC Testing

### Activity

Measured by its ability of the immobilized protein to support the adhesion of Jurkat human acute T cell leukemia cells.

When  $8 \times 10^4$  cells/well are added to ESM1-His coated plates (10 $\mu$ g/mL, 100  $\mu$ L/well), approximately 48% will adhere after 30 minutes at 37°C.

### Purity

> 95 % as determined by SDS-PAGE

### Endotoxin

< 1.0 EU per  $\mu$ g of the protein as determined by the LAL method

### Stability

Samples are stable for up to twelve months from date of receipt at -70°C

### Predicted N terminal

Trp 20

### Molecular Mass

The secreted recombinant human ESM1 consists of 176 amino acids and predicts a molecular mass of 19.6 KDa. The apparent molecular mass of the protein is approximately 23-27 KDa in SDS-PAGE under reducing conditions.

### Formulation

Lyophilized from sterile 20mM Tris, 500mM NaCl, 10% glycerol, pH 8.0.

1. 5 % trehalose and mannitol are added as protectants before lyophilization.

2. Please contact us for any concerns or special requirements.

## Usage Guide

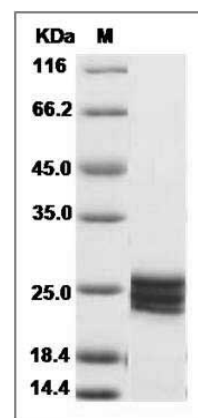
### Storage

Store it under sterile conditions at -20°C to -80°C. It is recommended that the protein be aliquoted for optimal storage. Avoid repeated freeze-thaw cycles.

### Reconstitution

Adding sterile water, prepare a stock solution of 0.25 mg/ml. Concentration is measured by UV-Vis.

### SDS-PAGE



Human ESM1 / Endocan Protein (His Tag) SDS-PAGE