

# Human S100A8 (His Tag) recombinant protein



Catalog Number: 502322

## General Information

### Gene Name Synonym

Calgranulin-A; Calprotectin L1L subunit; Cystic fibrosis antigen; Leukocyte L1 complex light chain; Migration inhibitory factor-related protein 8; S100 calcium-binding protein A8; Urinary stone protein band A; Protein S100-A8, N-terminally processed

### Protein Construction

A DNA sequence encoding the human S100A8 (NP\_002955.2) (Leu 2-Glu 93) was expressed, with a polyhistidine tag at the N-terminus.

### Organism

Human

### Expression Host

E. coli

## QC Testing

### Activity

1. Measured by its ability to bind recombinant human S100A9 in a functional ELISA.
2. This product displays no activity in cell-based assay.

### Purity

> 95 % as determined by SDS-PAGE

### Endotoxin

Please contact us for more information.

### Stability

Samples are stable for up to twelve months from date of receipt at -70°C

### Predicted N terminal

Met

### Molecular Mass

The recombinant human S100A8 consisting of 103 amino acids and migrates as an approximately 12.2 kDa band in SDS-PAGE under reducing conditions as predicted.

### Formulation

Lyophilized from sterile 20mM Tris, pH 8.5, 10% glycerol

1. 5 % trehalose and mannitol are added as protectants before lyophilization.

2. Please contact us for any concerns or special requirements.

## Usage Guide

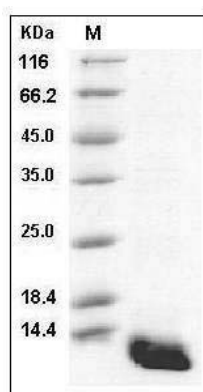
### Storage

Store it under sterile conditions at -20°C to -80°C. It is recommended that the protein be aliquoted for optimal storage. Avoid repeated freeze-thaw cycles.

### Reconstitution

Adding sterile water, prepare a stock solution of 0.25 mg/ml. Concentration is measured by UV-Vis.

### SDS-PAGE



Human S100A8 / CAGA Protein (His Tag) SDS-PAGE