

Human KLK6/Kallikrein 6/Neurosin recombinant protein



Catalog Number: 502254

General Information

Protein Construction

A DNA sequence encoding the human KLK6 (NP_002765.1) (Met1-Lys244) was expressed with six amino acids (LEVLFQ) at the C-terminus.

Organism

Human

Expression Host

Human Cells

QC Testing

Purity

> (61.6 +34.0) % as determined by SDS-PAGE.

Endotoxin

<1.0 EU per μg protein as determined by the LAL method.

Stability

Samples are stable for up to twelve months from date of receipt at -70°C

Predicted N terminal

Glu 17

Molecular Mass

The recombinant human KLK6 consists 235 amino

acids and predicts a molecular mass of 25.9 kDa.

Formulation

Lyophilized from sterile PBS, pH 7.4.

1. 5 % trehalose and mannitol are added as protectants before lyophilization.

2. Please contact us for any concerns or special requirements.

Usage Guide

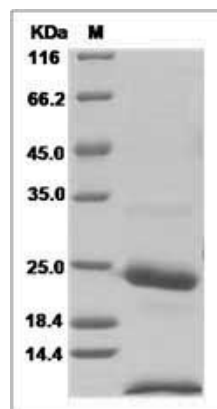
Storage

Store it under sterile conditions at -20°C to -80°C . It is recommended that the protein be aliquoted for optimal storage. Avoid repeated freeze-thaw cycles.

Reconstitution

Adding sterile water, prepare a stock solution of 0.25 mg/ml. Concentration is measured by UV-Vis.

SDS-PAGE



KLK6 protein SDS-PAGE