

# Human MUC-1/Mucin 1/CD227 (Fc Tag) recombinant protein



Catalog Number: 502252

## General Information

### Gene Name Synonym

Breast carcinoma-associated antigen DF3; Cancer antigen 15-3; Carcinoma-associated mucin; Episialin; H23AG; Krebs von den Lungen-6; PEMT; Peanut-reactive urinary mucin; Polymorphic epithelial mucin; Tumor-associated epithelial membrane antigen; Tumor-associated mucin; Mucin-1 subunit alpha; Mucin-1 subunit beta; MUC1-CT

### Protein Construction

A DNA sequence encoding the human MUC1 isoform 2 (NP\_001018016.1) extracellular domain (Met1-Gly167) was fused with the Fc region of mouse IgG at the C-terminus.

### Organism

Human

### Expression Host

Human Cells

## QC Testing

### Purity

( 84.9+9.2) % as determined by SDS-PAGE

### Endotoxin

< 1.0 EU per  $\mu\text{g}$  of the protein as determined by the LAL method

### Stability

Samples are stable for up to twelve months from date of receipt at  $-70^{\circ}\text{C}$

### Predicted N terminal

Ser 33

### Molecular Mass

The recombinant human MUC1/mFc is a disulfide-linked homodimer. The reduced monomer consists of 369 amino acids after removal the signal peptide and has a predicted molecular mass of 41 kDa. As a result of glycosylation, rhMUC1/mFc monomer migrates as an approximately 50.2 and 34.8 kDa band in SDS-PAGE under reducing conditions.

### Formulation

Lyophilized from sterile PBS, pH 7.4.

1. 5 % trehalose and mannitol are added as protectants before lyophilization.

2. Please contact us for any concerns or special requirements.

## Usage Guide

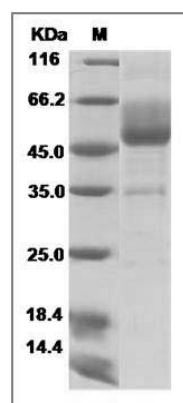
### Storage

Store it under sterile conditions at  $-20^{\circ}\text{C}$  to  $-80^{\circ}\text{C}$ . It is recommended that the protein be aliquoted for optimal storage. Avoid repeated freeze-thaw cycles.

### Reconstitution

Adding sterile water, prepare a stock solution of 0.25 mg/ml. Concentration is measured by UV-Vis.

### SDS-PAGE



Human Mucin-1 / MUC-1 Protein (Fc Tag) SDS-PAGE