

# Mouse CD10/Neprilysin (His Tag) recombinant protein



Catalog Number: 502228

## General Information

### Gene Name Synonym

Atriopeptidase; Enkephalinase; Neutral endopeptidase 24.11; Skin fibroblast elastase

### Protein Construction

A DNA sequence encoding the extracellular domain (Tyr 52-Trp 750) of mouse Mme (NP\_032630.2) was fused with a polyhistidine tag at the N-terminus.

### Organism

Mouse

### Expression Host

Human Cells

## QC Testing

### Activity

Measured by its ability to cleave the fluorogenic peptide substrate, Mca-RPPGFSAFK-(Dnp)-OH, R&D Systems, Catalog # ES005. The specific activity is > 3000 pmoles/min/μg.

### Purity

> 98 % as determined by SDS-PAGE

### Endotoxin

< 1.0 EU per μg of the protein as determined by the LAL method

### Stability

Samples are stable for up to twelve months from date of receipt at -70°C

### Predicted N terminal

His

## Molecular Mass

The secreted recombinant mouse Mme consists of 715 amino acids and has a calculated molecular mass of 82.2 kDa. As a result of glycosylation, the recombinant protein migrates as an approximately 90-100 kDa protein in SDS-PAGE under reducing conditions.

## Formulation

Lyophilized from sterile PBS, pH 7.4

1. 5 % trehalose and mannitol are added as protectants before lyophilization.

2. Please contact us for any concerns or special requirements.

## Usage Guide

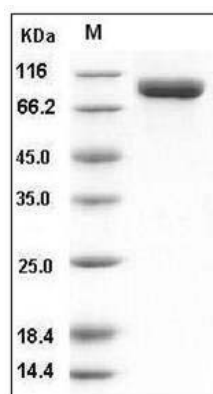
### Storage

Store it under sterile conditions at -20°C to -80°C. It is recommended that the protein be aliquoted for optimal storage. Avoid repeated freeze-thaw cycles.

## Reconstitution

Adding sterile water, prepare a stock solution of 0.25 mg/ml. Concentration is measured by UV-Vis.

## SDS-PAGE



Mouse CD10 / Neprilysin / MME Protein (His Tag)  
SDS-PAGE