

# Human Podoplanin (His & Fc Tag) recombinant protein



Catalog Number: 502218

## General Information

### Gene Name Synonym

Aggrus; Glycoprotein 36; PA2.26 antigen; T1-alpha

### Protein Construction

A DNA sequence encoding the extracellular domain of human PDPN short isoform (Q86YL7-1) (Met 1-Lys 123) was fused with the C-terminal polyhistidine-tagged Fc region of human IgG1 at the C-terminus.

### Organism

Human

### Expression Host

Human Cells

## QC Testing

### Activity

1. Measured by its binding ability in a functional ELISA.
2. Immobilized human Podoplanin (Cat: 502218) at 10 µg/mL (100 µl/well) can bind biotinylated human CLEC1B-His (Cat:501731), The EC<sub>50</sub> of biotinylated human CLEC1B-His is 0.4-1.0 µg/mL.

### Purity

> 95 % as determined by SDS-PAGE

### Endotoxin

< 1.0 EU per µg of the protein as determined by the LAL method

### Stability

Samples are stable for up to twelve months from date of receipt at -70°C

### Predicted N terminal

Glu 21

### Molecular Mass

The recombinant human PDPN/Fc chimera is a disulfide-linked homodimer. The reduced monomer comprises 351 amino acids with a predicted molecular mass of 38.6 kDa. As a result of glycosylation, rh PDPN/Fc monomer migrates as an approximately 50-55 kDa band in SDS-PAGE under reducing conditions.

### Formulation

Lyophilized from sterile PBS, pH 7.4

1. 5 % trehalose and mannitol are added as protectants before lyophilization.
2. Please contact us for any concerns or special requirements.

## Usage Guide

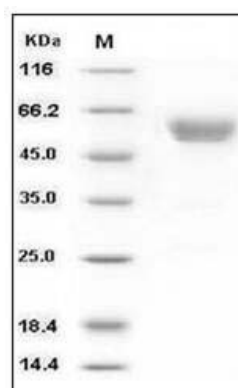
### Storage

Store it under sterile conditions at -20°C to -80°C. It is recommended that the protein be aliquoted for optimal storage. Avoid repeated freeze-thaw cycles.

### Reconstitution

Adding sterile water, prepare a stock solution of 0.25 mg/ml. Concentration is measured by UV-Vis.

### SDS-PAGE



Human Podoplanin / PDPN Protein (His & Fc Tag)

# Human Podoplanin (His & Fc Tag) recombinant protein



Catalog Number: 502218

---

SDS-PAGE