

# Rat CD150 / SLAM / SLAMF1 (Fc Tag) recombinant protein



Catalog Number: 502197

## General Information

### Gene Name Synonym

Similar to signaling lymphocytic activation molecule (Predicted)

### Protein Construction

A DNA sequence encoding the rat Slamf1 (NP\_001102548.1) (Met1-Leu242) was expressed with the Fc region of human IgG1 at the C-terminus.

### Organism

Rat

### Expression Host

Human Cells

## QC Testing

### Purity

> (87.3+8.5) % as determined by SDS-PAGE.

### Endotoxin

<1.0 EU per µg protein as determined by the LAL method.

### Stability

Samples are stable for up to twelve months from date of receipt at -70°C

### Predicted N terminal

Thr 25

## Molecular Mass

The recombinant rat Slamf1 consists 456 amino acids and predicts a molecular mass of 51.3 kDa.

## Formulation

Lyophilized from sterile PBS, pH 7.4.

1. 5 % trehalose and mannitol are added as protectants before lyophilization.

2. Please contact us for any concerns or special requirements.

## Usage Guide

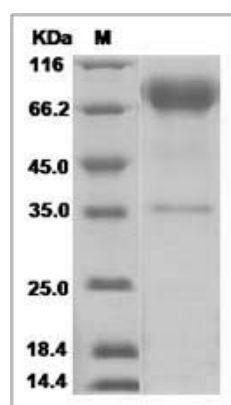
### Storage

Store it under sterile conditions at -20°C to -80°C. It is recommended that the protein be aliquoted for optimal storage. Avoid repeated freeze-thaw cycles.

### Reconstitution

Adding sterile water, prepare a stock solution of 0.25 mg/ml. Concentration is measured by UV-Vis.

### SDS-PAGE



Slamf1 protein SDS-PAGE