

Human KLK1/Kallikrein 1 (His Tag) recombinant protein



Catalog Number: 502189

General Information

Gene Name Synonym

Kidney/pancreas/salivary gland kallikrein; Tissue kallikrein

Protein Construction

A DNA sequence encoding the human KLK1 (NP_002248.1) precursor (Met 1-Ser 262) was expressed with a polyhistidine tag at the C-terminus.

Organism

Human

Expression Host

Human Cells

QC Testing

Activity

Measured by its ability to cleave a flourogenic peptide substrate Pro-Phe-Arg-7-amido-4-methylcoumarin (PFR-AMC). The specific activity is >1,500 pmoles/min/μg.

Purity

> 95 % as determined by SDS-PAGE

Endotoxin

< 1.0 EU per μg of the protein as determined by the LAL method

Stability

Samples are stable for up to twelve months from date of receipt at -70°C

Predicted N terminal

Ser 23

Molecular Mass

The secreted recombinant human KLK1 is a monomeric protein after cleavage of the signal peptide. It consists of 251 amino acids and predicts a molecular mass of 28 kDa. In SDS-PAGE under reducing conditions, it migrates with the apparent molecular mass of 50 kDa due to glycosylation.

Formulation

- Lyophilized from sterile PBS, pH 7.4
1. 5 % trehalose and mannitol are added as protectants before lyophilization.
 2. Please contact us for any concerns or special requirements.

Usage Guide

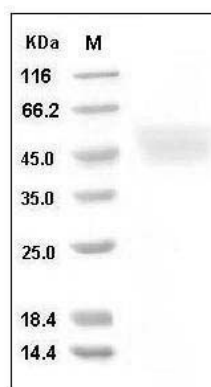
Storage

Store it under sterile conditions at -20°C to -80°C. It is recommended that the protein be aliquoted for optimal storage. Avoid repeated freeze-thaw cycles.

Reconstitution

Adding sterile water, prepare a stock solution of 0.25 mg/ml. Concentration is measured by UV-Vis.

SDS-PAGE



Human KLK-1 / Kallikrein-1 Protein (His Tag)
SDS-PAGE